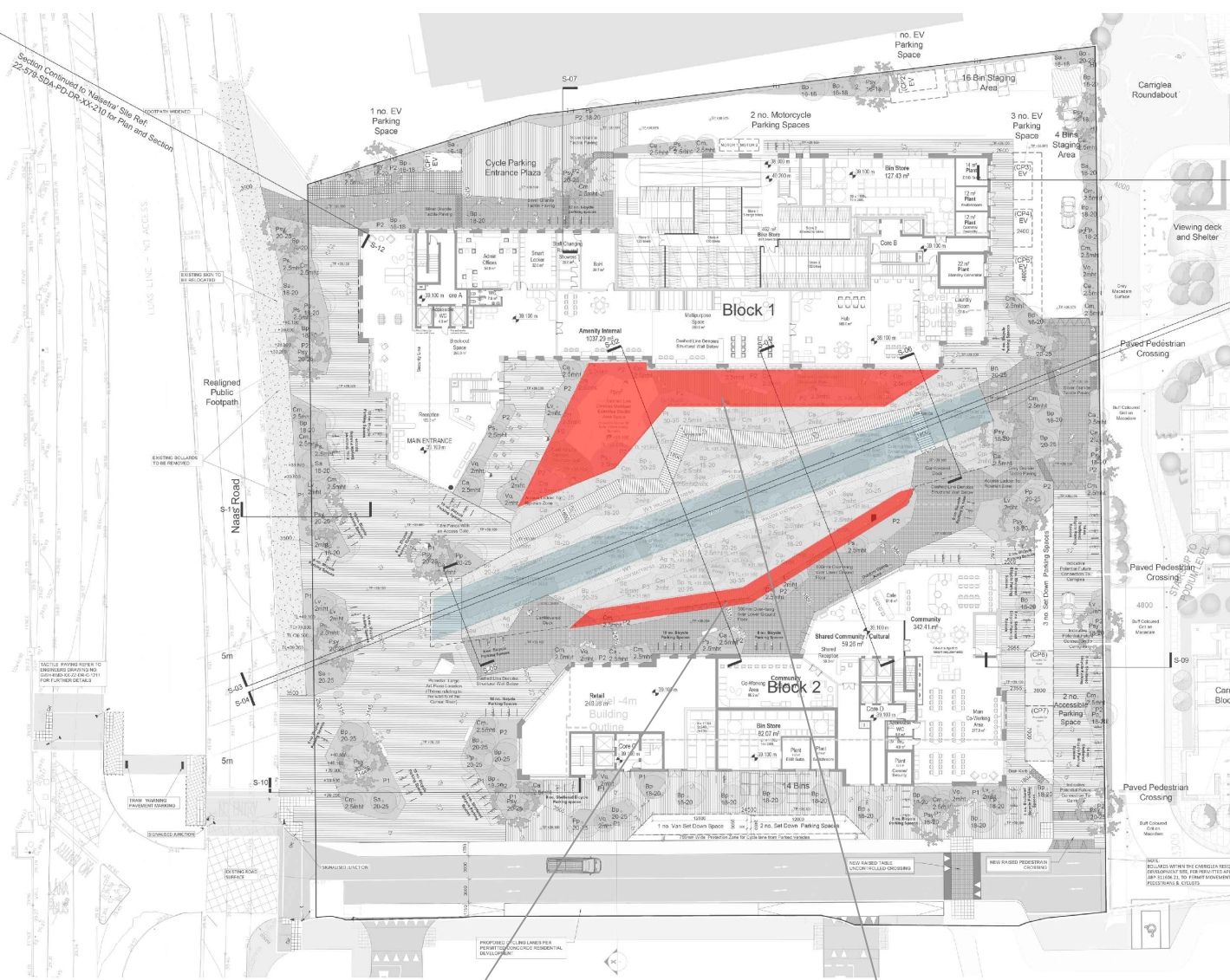


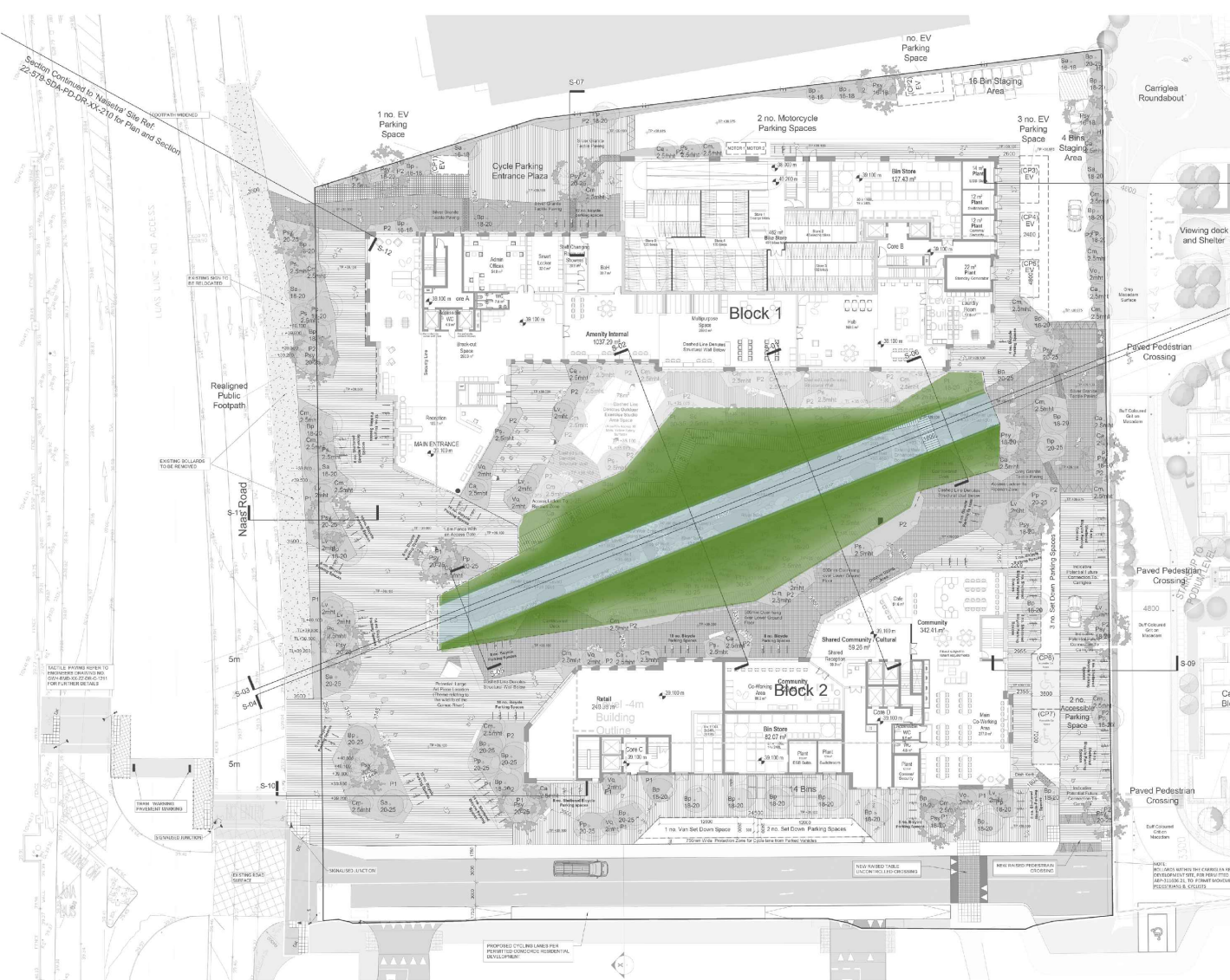
Relationship Between Accessible Public Open Space, Riparian Zone and Basement Level External Spaces



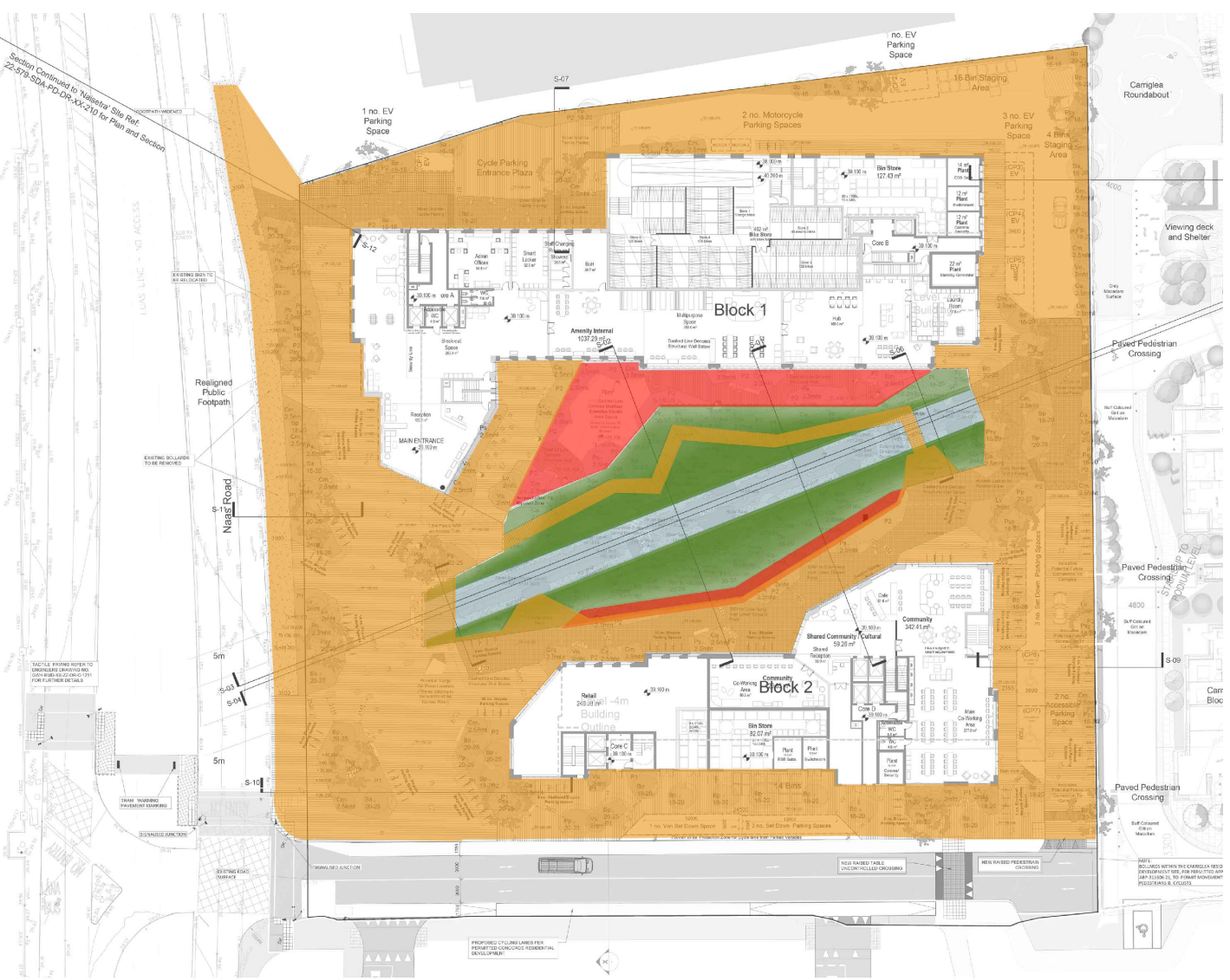
GROUND FLOOR



LOWER GROUND FLOOR



RIPARIAN VEGETATION
AND RIVER CAMAC



COMBINED LEVELS

Block 2



SECTION THROUGH THE RIPARIAN ZONE, BASEMENT LEVEL
EXTERNAL AREAS AND GROUND FLOOR PUBLIC OPEN SPACE

Block 1



PUBLIC OPEN SPACE DIAGRAM TO ILLUSTRATE
RIPARIAN ZONE AND USABLE PUBLIC OPEN SPACE

Site : 9620m²
Inaccessible Public Riparian Zone : 1261m² (13%)
Accessible Usable Public Open Space : 3000m² (31%)

KEY

- Ground Floor (+39.100)
- Lower Ground Floor (+35.100)
- Riparian Vegetation (+30.000 to +31.950)
- River (Water Level) (+30.400 to +29.400)

- Fire Tender Access Route
- Tactile Paving
- Shared Surfaces



Rev/Date	Description	By

This drawing is copyright. Figured dimensions to be used in all cases.
All dimensions to be checked on site prior to commencement of works.

STEPHEN DIAMOND ASSOCIATES
CHARTERED LANDSCAPE ARCHITECTS

68 Pearse Street Dublin 2 Tel: 01 6775670
email: mail@sda.ie fax: 01 6775669

Client Malclose Limited Project No: 22-579

Project Gowan House Scale NTS @ A1

Title Relationship: Riparian Zone and Open Space Date Issued 2023-10-09

Dwg No 22-579-SDA-PD-DR-XX-302

Drawn BS Purpose Planning Checked SD



FIRE TENDER ACCESS ROUTE AND SHARED SURFACES